

Series 16

24m Series 16 - Normal

Description:

The Series 16 is designed as a 4-sided steel lattice tower, composed of solid round bars used as legs and bracings.

The tower is prepared for installation of 2 m toppole.

The Series 16 Normal tower can be used for most areas in Denmark ($v_b=24$ m/s, terrain category II).

Specification:

Total theoretical tower weight = 3080 kg

Leg distance at tower base = 1420 mm

Foundation bolts: 16 x M27

The steel is hot dip galvanized according to DS/EN ISO 1461.

The design of the lattice tower is according to:

DS/EN 1993-3-1 – Design of steel structures – Towers, masts and chimneys.

DS/EN 1991-1-4 – Actions on structures – Wind actions.

The tower is designed for three operators equal to 15 m² wind drag area equally distributed over the top 9 m.

Ladder with söll rail from base to top – 0,15 m²/m.

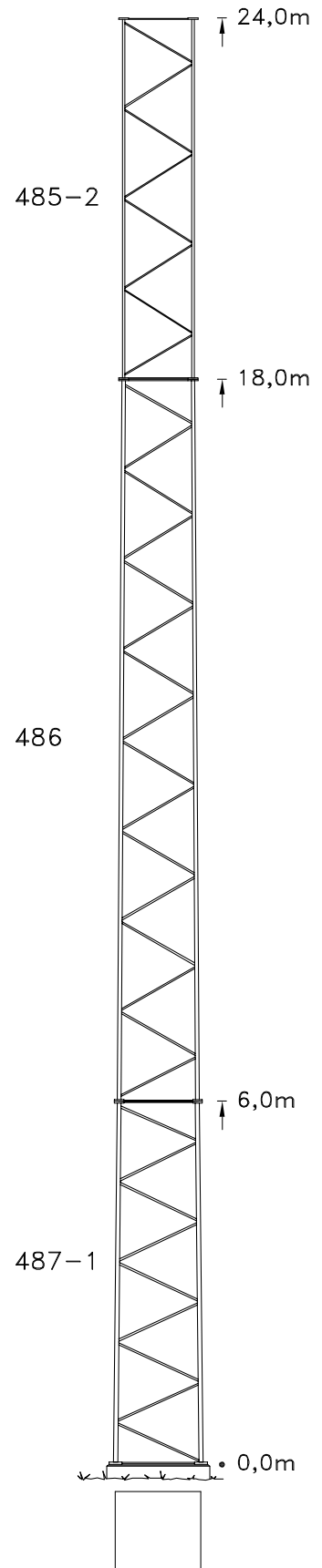
The following feeder load is assumed:

0,20 m²/m for each operator, (total of 0,60 m²/m) distributed on 2 sides.

Foundation types:

Normally a traditional Pier & Pad foundation is designed and casted for a S16 tower.

Carl C. can assist with the design if required, based on site specific geotechnical specifications.



TELECOMMUNICATION

Square Tower

DATA SHEET

Product no.

S 16 24,0M-81

Ref. nr.

02.04.01.11

Latest rev.

06.12.2019



Series 16